

Alice[®]

704 – DUAL PPM DRIVE CARD (BAL I/P DUAL SUPPLY RAIL)

WIRING DETAILS:

- J1-1 +9V TO +18V
- J1-2 OV
- J1-3 -9V TO -18V
- J1-4 +
- J1-5 -
- J1-6 SCR
- J1-7 +
- J1-8 -
- J1-9 SCR
- J1-10
- J1-11
- J1-12
- J1-13
- J1-14
- J1-15
- J1-16

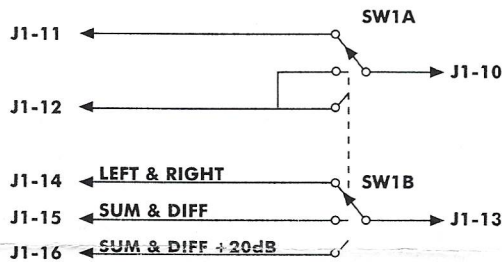


DIAGRAM 1 SUM DIFFERENCE SWITCHING

- J2-1
- J2-2
- J2-3
- J2-4
- J2-5
- J2-6 OVERLOAD LED LEFT +
- J2-7 OVERLOAD LED RIGHT +
- J2-8 OVERLOAD LEDS - (LEFT AND RIGHT)

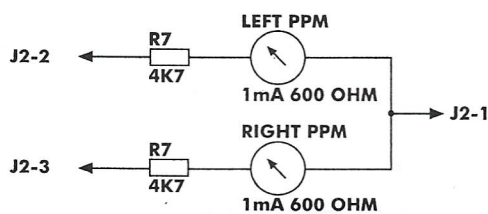


DIAGRAM 2A PARALLEL METER CONNECTION

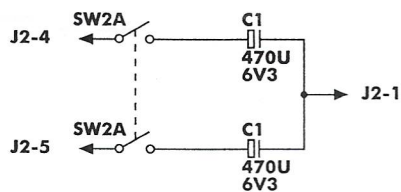
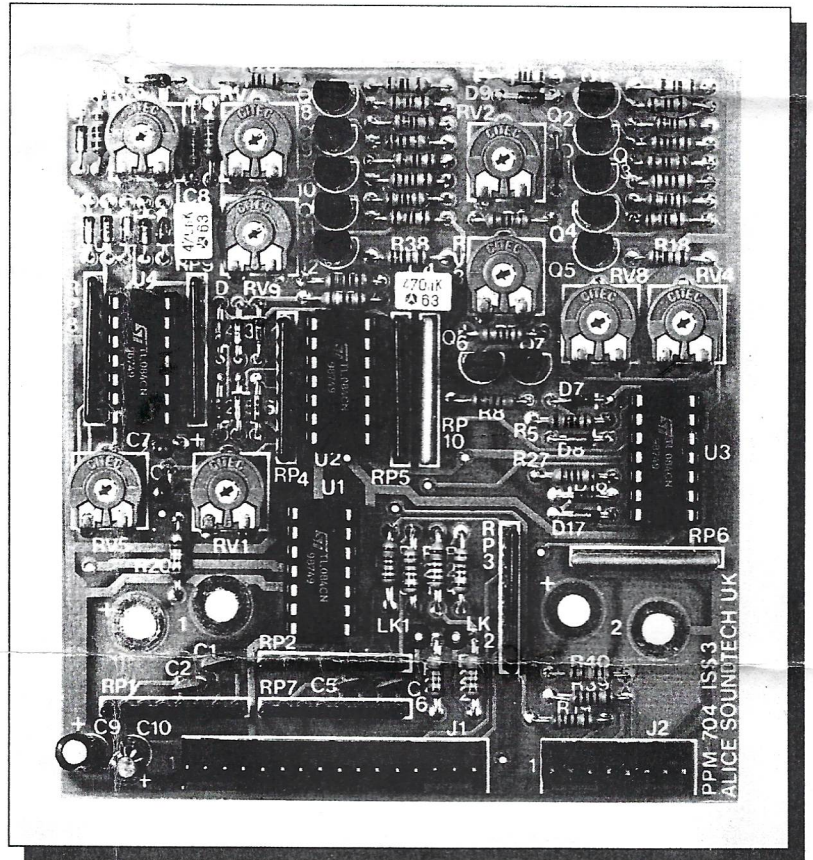


DIAGRAM 2B SLOW MODE CONNECTION



The Sum & Difference Levels can be set to BBC specifications. By cutting links highlighted (see blue circles on picture) and re-aligning RV1 and RV5 for 0dB.

This will produce $\frac{L+R}{\sqrt{2}}$

For unbalanced input link J1-5 to J1-6 and J1-8 to J1-9.

NB. BEFORE COMMENCING ALIGNMENT – ADJUST MECHANICAL ZERO ON METERS
 DESIGN & SPECIFICATION MAY CHANGE WITHOUT PRIOR NOTICE
 E&OE COPYRIGHT 1995 ALICE SOUNDTECH PLC

NOTES